

WEINGUT ROBERT WEIL

Peerless, uncompromising Rieslings from the Rheingau



Winemaker Wilhelm Weil is the great-grandson of the estate's founder.

HISTORY

Founded in 1875, Weingut Robert Weil is considered to be one of the Rheingau's younger wine estates. It is located in the heart of Kiedrich, a village first documented in the year 950. Kiedrich Turmberg and Kiedrich Gräfenberg, the estate's top vineyards, are among the finest sites in the Rheingau.

The estate cultivates 70 hectares (173 acres) of vineyards, of which 98 percent are planted with Riesling. Today, Wilhelm Weil, the great-grandson of the estate's founder, carries on the uncompromising, quality-oriented vineyard and cellar practices – a tradition that has been the hallmark of the winery for four generations.

THE VINEYARDS

Kiedrich Turmberg and Kiedrich Gräfenberg are situated on a southwest-facing ridge and a steep cliff with inclines of up to 60 percent. Their soils consist of deep and medium-deep stony, fragmented phyllite partially mixed with loess and loam. This combination of barren stony soils, an ideal microclimate, steep inclination and southwestern exposure allows the grapes to hang on the vine for a very long time. The resulting wines are complex and rich in minerals, with great elegance and finesse.

The vineyards are cultivated in an environmentally friendly manner: organic fertilizer is used as needed; green cover is planted in alternating rows to optimize the humus content of the soil; herbicides are never used, and other protective measures are used only sparingly and with respect for habitat.

Grapes are harvested by hand, with an extremely critical selection that involves up to 17 rounds through the vineyards. The goal of this meticulous attention is to reap the finest fruit possible for wines in every Prädikat level. 🍷

ACCOLADES FOR WILHELM WEIL

- Top 100 Wineries of 2011 – *Wine & Spirits*
- Winemaker of the Year 1997, *Gault Millau*
- "...the most consistently brilliant winemaker in the Rheingau." – *Michael Broadbent*



THE TERROIRS OF ROBERT WEIL

Kiedrich Turmberg

The name Turmberg means "tower hill" and refers to the ruins of the medieval Burg Scharfenstein castle. It is a separate little hill, directly adjacent to the Gräfenberg, and is rated as premier cru. The German wine law of 1971 incorporated it into the Gräfenberg, but in 2005 it was reinstated as an individual, classified site. It is a monopole of Robert Weil.

The Turmberg is a steep, southwest-facing site. It has a slate base, with a thin topsoil composed of stony, gritty phyllite mixed with loess and loam.



Kiedrich
Turmberg

Kiedrich Gräfenberg

This classified vineyard has been a renowned site since the 12th century. The name means "hill of the counts," and it is undisputedly one of the greatest vineyards of the Rheingau.

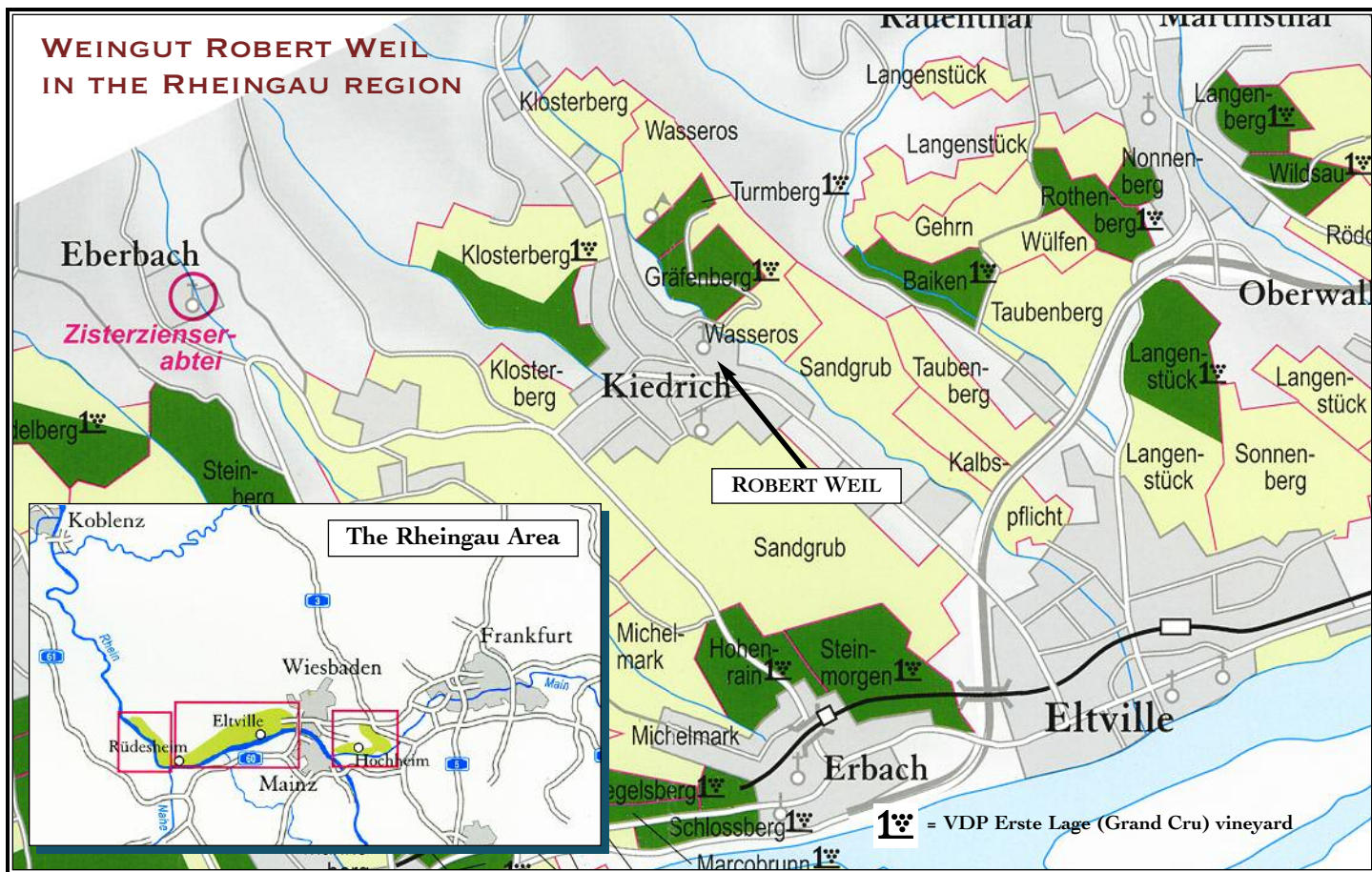
The soil is of similar composition to the Turmberg – phyllite, loess and loam on a slate base – but the topsoil is deeper and heavier, and retains water better. The vineyard is steep, with ideal southwest exposure. It benefits from good air circulation as winds are drawn from the Taunus mountains down into the Rhine valley.



Kiedrich
Gräfenberg

LOOSEN BROS. USA LTD.

Tel. +1-503-984-3041 • info@drloosen.com • www.LoosenBrosUSA.com



THE WINES (CORE U.S. SELECTION)

The character of Robert Weil Rieslings is marked by the mineral-rich soils of the vineyards. These wines offer nuanced flavors and bouquets, and a perfect interplay of fine yet firm acidity with natural sweetness and extract.

Estate wines: sourced from parcels that neighbor the estate’s classified single-vineyard sites.

- **Riesling Dry:** A full-bodied dry Riesling that pairs well with fresh fish and many other lighter dishes.
- **Riesling Tradition:** Bright and juicy, this is a more fruit-driven Riesling for daily enjoyment.
- **Riesling Kabinett:** A delicate, off-dry Riesling with moderate alcohol.

Classified, single-vineyard wines: exclusively from the steep hillside vineyards of Weingut Robert Weil.

- **Kiedrich Turmberg Riesling Trocken:** Deep in mineral-driven aroma and rich on the palate — a distinctive Riesling that comes from Weil’s wholly owned parcel beneath the medieval Gräfenberg tower.
- **Kiedrich Gräfenberg Riesling Trocken *Erstes Gewächs*:** A lush, ripe and full-bodied dry Riesling that is carried nimbly on a fine mineral frame. The epitome of Rheingau’s “First Growth” bottlings, this is regularly judged to be among the best Rieslings of Germany.
- **Kiedrich Gräfenberg Riesling Spätlese:** This is a wine of stunning nobility and richness, with many layers of complex fruit balanced by muscular minerality.

